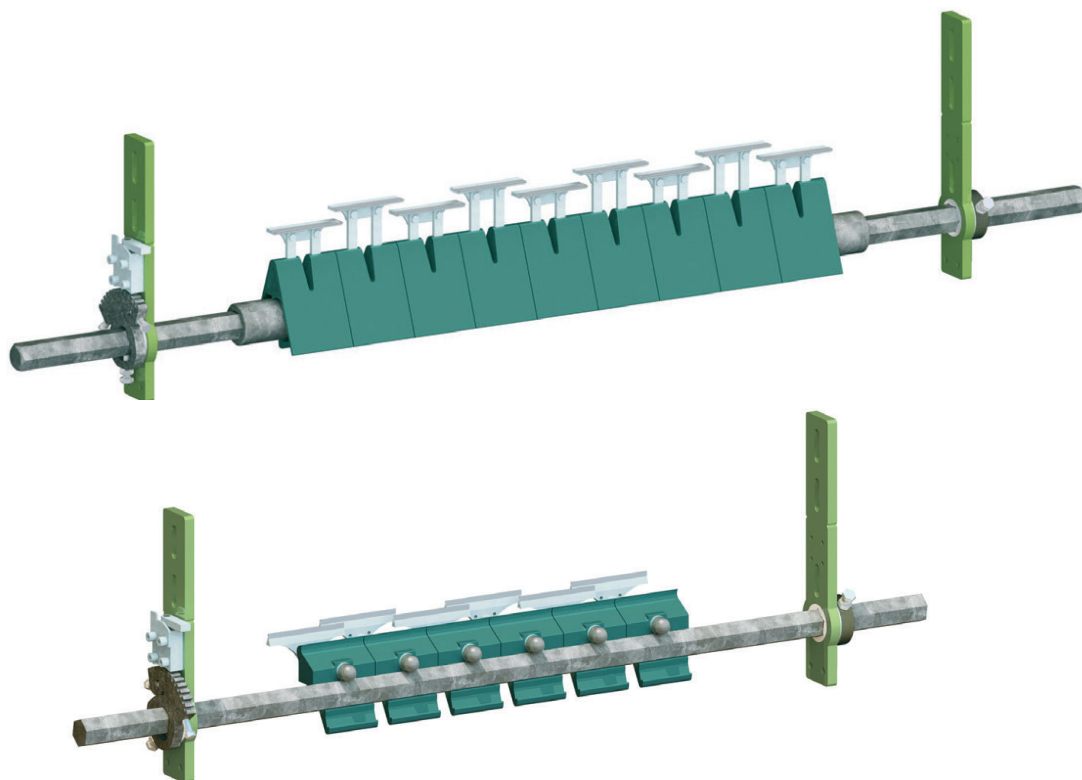


AFSCHRAPERS SCHULTE STARCLEAN®

CONVEYOR BELT CLEANER WITH RASTER TENSIONING DEVICE SERIES 800

Type 830.85 / 830.285 / 832.85 / 832.285

Featuring blades with a polyurethane base and special integrated carbide inserts for cleaning conveyor belts at small-diameter pulleys. Suitable for reversible belt installations. Scraper blade overlap is achieved through the combination of blades in long and short design ensuring perfect cleaning results across the entire scraping width.



The raster tensioning device

Special Characteristics include:

Quick tensioning and releasing of the scraper enabled by the automatic locking mechanism

Compact design

Minimum space requirements

Easy and efficient handling

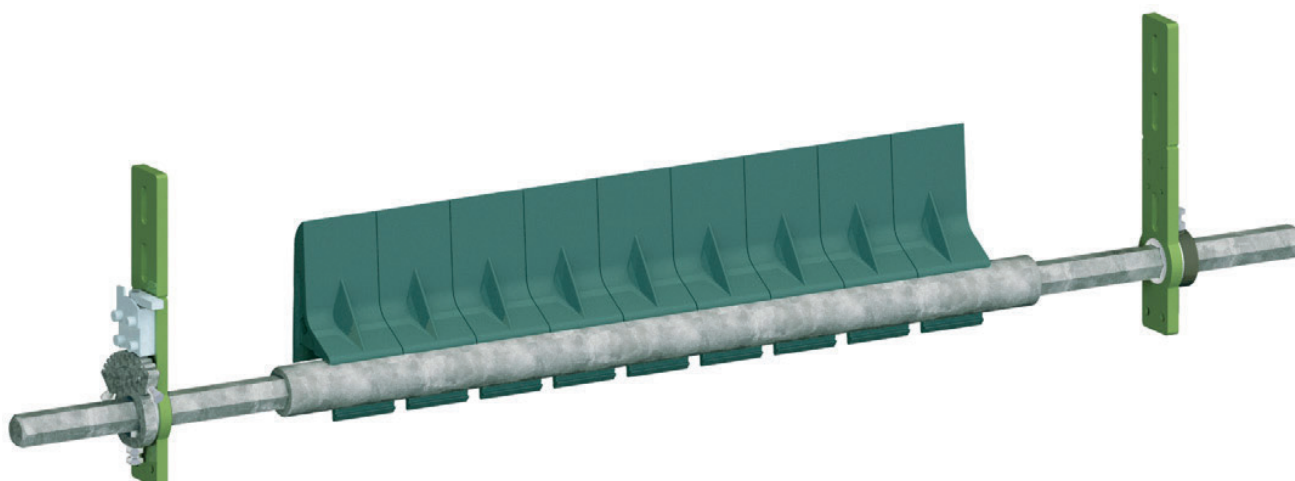


AFSCHRAPERS SCHULTE STARCLEAN®

CONVEYOR BELT CLEANER WITH RASTER TENSIONING DEVICE SERIES 800

Type 830.18 / 830.81 / 830.281 / 832.18 / 832.81 / 832.281

Featuring polyurethane blades for cleaning conveyor belts at small diameter pulleys. Suitable for reversible belt installations and mechanical belt joints.



STARCLEAN® Automatic tensioning device type 830-E with electric linear drive unit

For use in reversible conveyor systems and time interval-based cleaning.

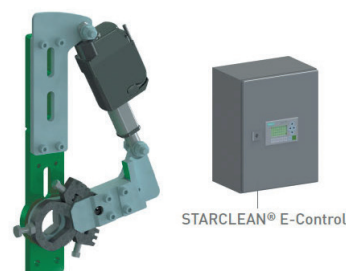
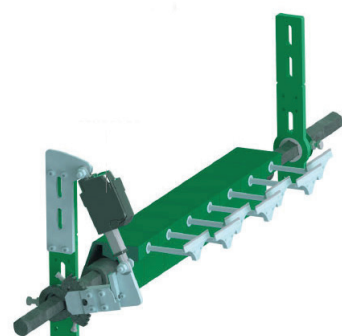
Enables non reversible scraper blades in reversible conveyor system, by automatic retraction when the belt direction is changing.

Optionally autonomous system with a preconfigured control unit incl. display and keypad or without control unit, for integration into existing belt conveyor control systems.

Quick tensioning device for easiest tension adjustment.

Durable drive unit for reliable operation!

Retrofit into existing systems type 830. Can be combined with primary or secondary belt scrapers.

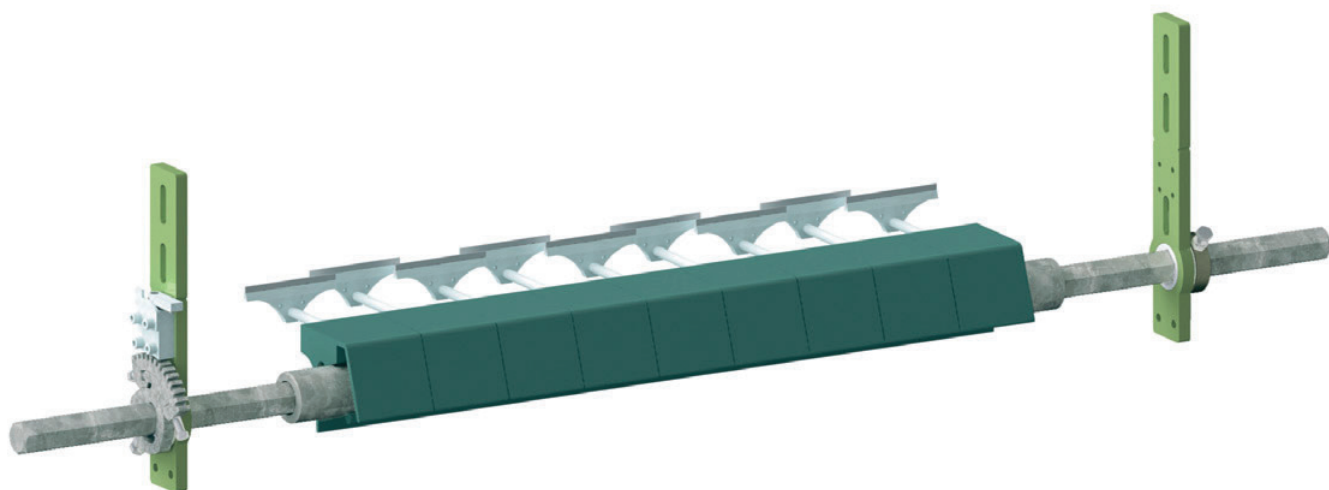


AFSCHRAPERS SCHULTE STARCLEAN®

SECONDARY SCRAPERS SERIES 800

Typ 830.56 / 830.53 / 832.56/ 832.53

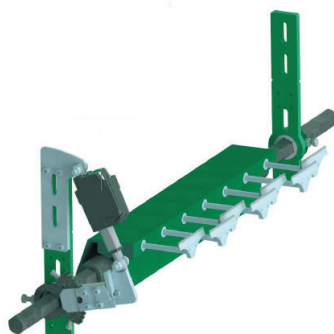
Featuring blades with a polyurethane base and pivoting special stainless-steel blades with carbide tips for cleaning conveyor belts below the belt.



The raster tensioning device



STARCLEAN® Automatic tensioning device
type 830-E with electric linear drive unit



STARCLEAN® E-Control